

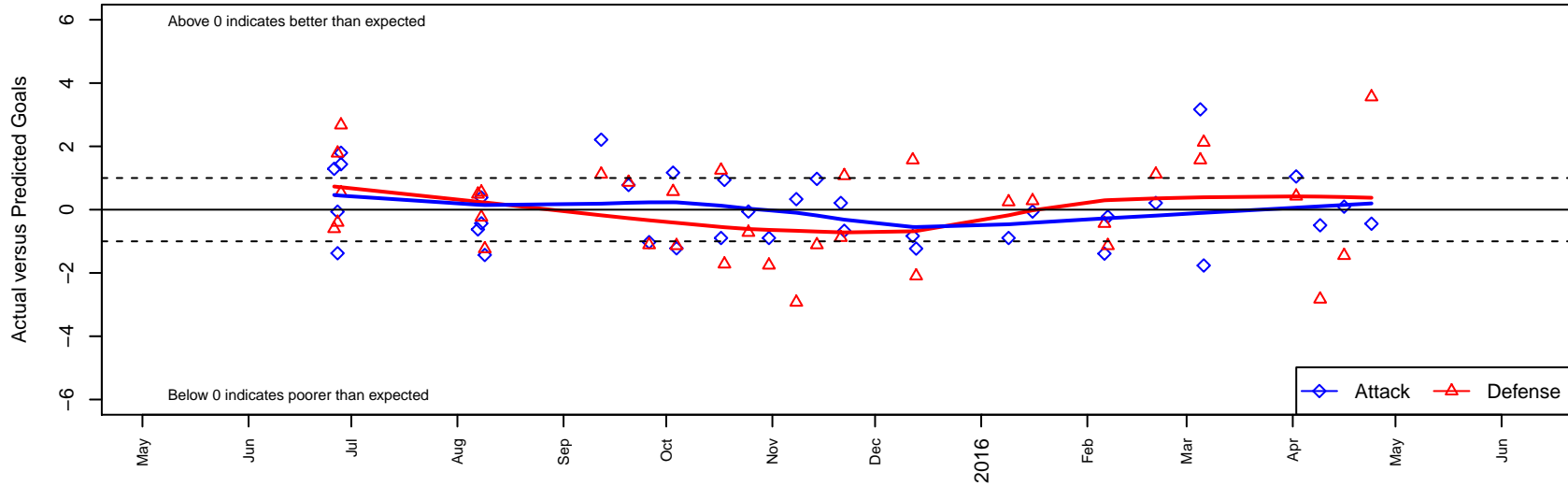
Whatcom Rangers Gold B02

Whatcom FC Rangers
 Bellingham, WA
 B02 total strength=1057
 attack=3.23 defense=1.84
 fall league = RCL B02 Div 3, RCL B02 7V2
 spr league = Win RCL B02 Div 3

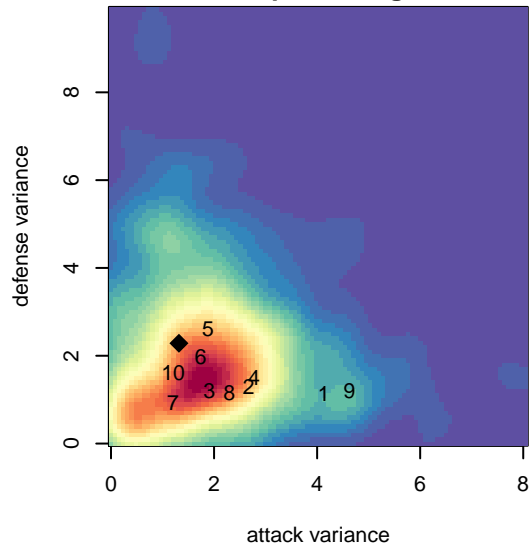
alt names used:
 41 Whatcom FC Rangers B02 Gold
 17 WFC Rangers BU13 Gold
 Whatcom FC Ra – BU02 Gold
 Whatcom FC Ra – BU02 Gold
 Whatcom FC Ra – BU02 Gold
 Whatcom FC Ra – BU02 Gold

Venues played:
 2015 Baker Blast Premier U13
 2015 Pacific Coast Challenge U13
 2015 RCL B02 Div 3
 2015 RCL B02 7V2
 2015 Win RCL B02 Div 3
 2015 WYS Championship B02

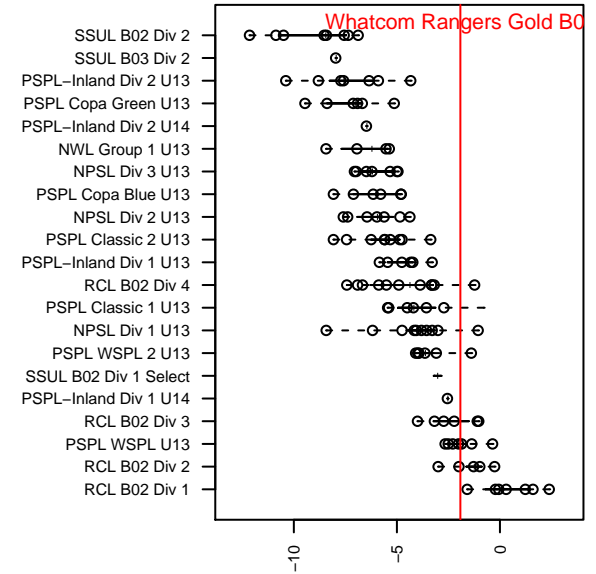
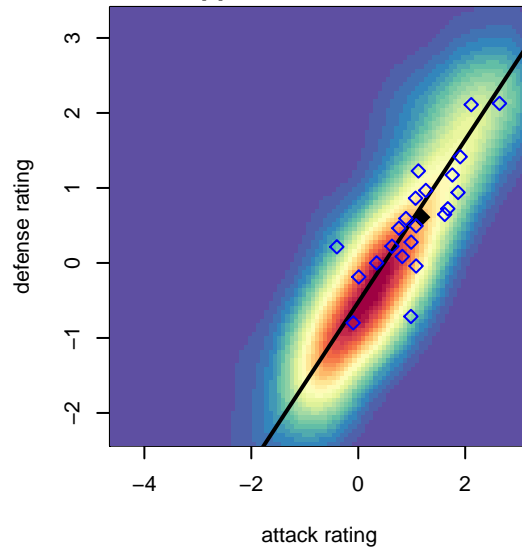
Whatcom Rangers Gold B02
 Dots are actual minus expected GF (blue circles) and GA (red triangles).
 Blue line is smoothed change in attack strength. Red is smoothed change in defense strength.



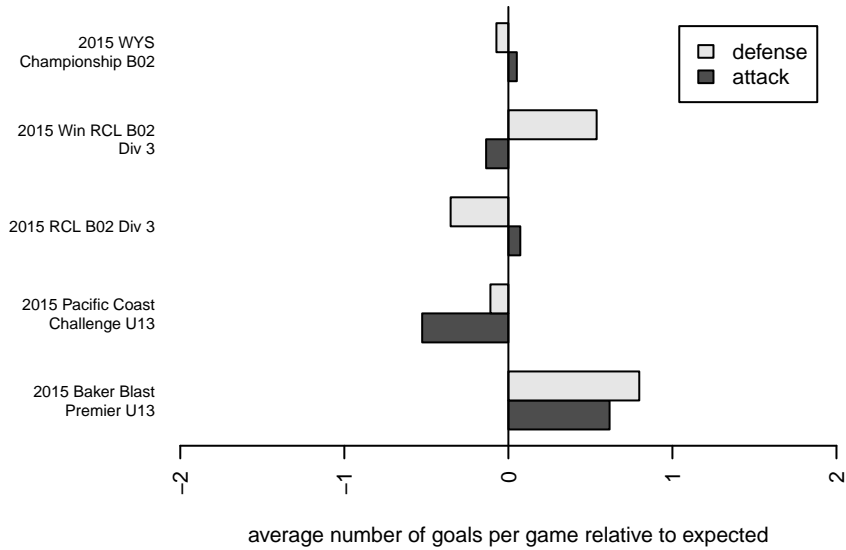
**attack and defense variance (black dot)
relative to other teams
and top 10 in region**



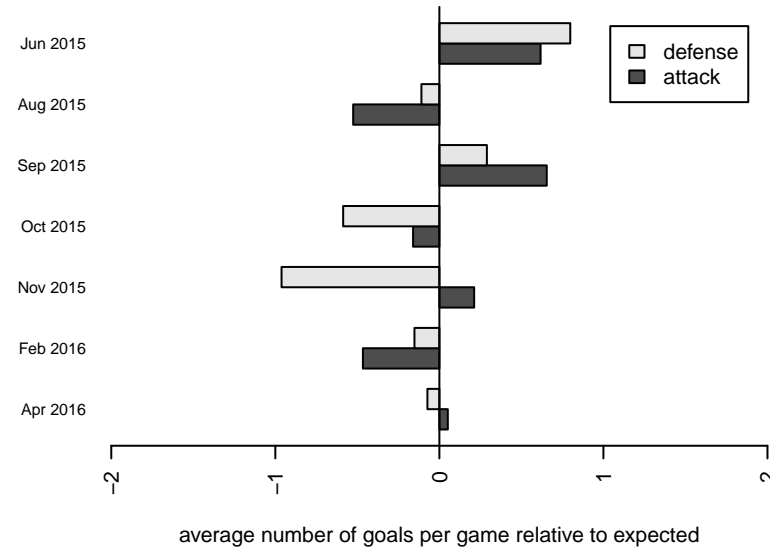
**attack and defense rating
relative to others at age
and all opponents in last 13 months**



Performance relative to 13 month average



Performance relative to 13 month average



| date | home | | away | | venue | pred.home | pred.away |
|------------|----------------------------|---|--------------------------|---|----------------------------------|-----------|-----------|
| 2016-04-24 | Whatcom Rangers Gold B02 | 0 | Seattle United Copa B02 | 4 | 2015 WYS Championship B02 | 0.44 | 7.56 |
| 2016-04-16 | WPFC Black B02 | 5 | Whatcom Rangers Gold B02 | 1 | 2015 WYS Championship B02 | 3.55 | 0.91 |
| 2016-04-09 | Crossfire Premier A B02 | 7 | Whatcom Rangers Gold B02 | 0 | 2015 WYS Championship B02 | 4.17 | 0.49 |
| 2016-04-02 | Whatcom Rangers Gold B02 | 2 | Eastside FC Red B02 | 3 | 2015 WYS Championship B02 | 0.95 | 3.43 |
| 2016-03-06 | Whatcom Rangers Gold B02 | 0 | Yakima Borges B02 | 1 | 2015 Win RCL B02 Div 3 | 1.76 | 3.13 |
| 2016-03-05 | Whatcom Rangers Gold B02 | 5 | Seattle United Samba B02 | 0 | 2015 Win RCL B02 Div 3 | 1.83 | 1.57 |
| 2016-02-21 | Whatcom Rangers Gold B02 | 3 | Harbor Premier Green B02 | 0 | 2015 Win RCL B02 Div 3 | 2.79 | 1.12 |
| 2016-02-07 | FWFC Blue B02 | 3 | Whatcom Rangers Gold B02 | 1 | 2015 Win RCL B02 Div 3 | 1.86 | 1.22 |
| 2016-02-06 | Snomomish United Black B02 | 2 | Whatcom Rangers Gold B02 | 2 | 2015 Win RCL B02 Div 3 | 1.56 | 3.39 |
| 2016-01-16 | Slammers Orange B02 | 1 | Whatcom Rangers Gold B02 | 3 | 2015 Win RCL B02 Div 3 | 1.28 | 3.06 |
| 2016-01-09 | Whatcom Rangers Gold B02 | 1 | Crossfire Premier C B02 | 1 | 2015 Win RCL B02 Div 3 | 1.90 | 1.24 |
| 2015-12-13 | Eastside FC White B02 | 4 | Whatcom Rangers Gold B02 | 0 | 2015 RCL B02 7V2 | 1.90 | 1.23 |
| 2015-12-12 | Seattle United Samba B02 | 0 | Whatcom Rangers Gold B02 | 1 | 2015 RCL B02 Div 3 | 1.57 | 1.83 |
| 2015-11-22 | Whatcom Rangers Gold B02 | 1 | WA Rush B02 | 2 | 2015 RCL B02 Div 3 | 1.67 | 3.07 |
| 2015-11-21 | Harbor Premier Green B02 | 2 | Whatcom Rangers Gold B02 | 3 | 2015 RCL B02 Div 3 | 1.12 | 2.79 |
| 2015-11-14 | Whatcom Rangers Gold B02 | 4 | WPFC White B02 | 2 | 2015 RCL B02 Div 3 | 3.03 | 0.89 |
| 2015-11-08 | WA Rush B02 | 6 | Whatcom Rangers Gold B02 | 2 | 2015 RCL B02 Div 3 | 3.07 | 1.67 |
| 2015-10-31 | Crossfire Premier C B02 | 3 | Whatcom Rangers Gold B02 | 1 | 2015 RCL B02 Div 3 | 1.24 | 1.90 |
| 2015-10-25 | Whatcom Rangers Gold B02 | 3 | Slammers Orange B02 | 2 | 2015 RCL B02 Div 3 | 3.06 | 1.28 |
| 2015-10-18 | Slammers Orange B02 | 3 | Whatcom Rangers Gold B02 | 4 | 2015 RCL B02 Div 3 | 1.28 | 3.06 |
| 2015-10-17 | Whatcom Rangers Gold B02 | 1 | Crossfire Premier C B02 | 0 | 2015 RCL B02 Div 3 | 1.90 | 1.24 |
| 2015-10-04 | Whatcom Rangers Gold B02 | 0 | FWFC Blue B02 | 3 | 2015 RCL B02 Div 3 | 1.22 | 1.86 |
| 2015-10-03 | Whatcom Rangers Gold B02 | 3 | Seattle United Samba B02 | 1 | 2015 RCL B02 Div 3 | 1.83 | 1.57 |
| 2015-09-26 | WPFC White B02 | 2 | Whatcom Rangers Gold B02 | 2 | 2015 RCL B02 Div 3 | 0.89 | 3.03 |
| 2015-09-20 | FWFC Blue B02 | 1 | Whatcom Rangers Gold B02 | 2 | 2015 RCL B02 Div 3 | 1.86 | 1.22 |
| 2015-09-12 | Whatcom Rangers Gold B02 | 5 | Harbor Premier Green B02 | 0 | 2015 RCL B02 Div 3 | 2.79 | 1.12 |
| 2015-08-09 | Liga Tlaxtli B02 | 3 | Whatcom Rangers Gold B02 | 1 | 2015 Pacific Coast Challenge U13 | 1.76 | 2.43 |
| 2015-08-08 | Liga Tlaxtli B02 | 2 | Whatcom Rangers Gold B02 | 2 | 2015 Pacific Coast Challenge U13 | 1.76 | 2.43 |

| date | home | | away | | venue | pred.home | pred.away |
|-------------|--------------------------|---|-------------------------------------|---|----------------------------------|------------------|------------------|
| 2015-08-08 | FC Edmonds Sting B02 | 0 | Whatcom Rangers Gold B02 | 8 | 2015 Pacific Coast Challenge U13 | 0.55 | 7.61 |
| 2015-08-07 | Whatcom Rangers Gold B02 | 1 | Liga Tlaxtli Rascals B02 | 1 | 2015 Pacific Coast Challenge U13 | 1.62 | 1.49 |
| 2015-06-28 | Whatcom Rangers Gold B02 | 8 | Coquitlam Metro Ford AC Milan 2003B | 1 | 2015 Baker Blast Premier U13 | 6.56 | 1.53 |
| 2015-06-28 | Mountain United 2003B | 1 | Whatcom Rangers Gold B02 | 3 | 2015 Baker Blast Premier U13 | 3.67 | 1.20 |
| 2015-06-27 | Surrey FC Thunder 2003B | 1 | Whatcom Rangers Gold B02 | 4 | 2015 Baker Blast Premier U13 | 0.60 | 4.06 |
| 2015-06-27 | Whatcom Rangers Gold B02 | 0 | Surrey United 2003B | 0 | 2015 Baker Blast Premier U13 | 1.38 | 1.78 |
| 2015-06-26 | Whatcom Rangers Gold B02 | 4 | SGU 2003B | 1 | 2015 Baker Blast Premier U13 | 2.71 | 0.40 |